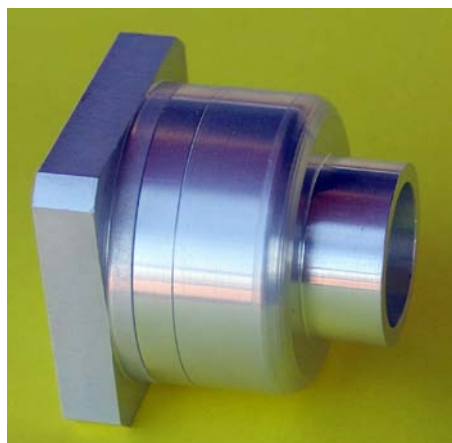


LVA-FH24001 - 24 GHz Feedhorn



Description

The LVA-LVA/FH24001 is a linear feedhorn with direct waveguide input for 24 GHz. This Feedhorn offer a WR-42 waveguide interface size coupled with a precision tolerance UG-595/U flange. The LVA-FH24001 is constructed of aluminium and plated in SurTec ® 650 to ensure durability and repeatable RF performance

LVA-WFH24001 - 24 GHz Feed horn Technical Data Sheet

Product code	Mod.	LVA-WF24001
Frequency	GHz	24.048 ÷ 24.194
Polarization		Vertical or Horizontal
Suitable for offset Dish with	F/D	0.6 ÷ 0.7
Return loss	dB	>26 dB
Waveguidesize		WR42
Flange		UG595/U Square cover
Case milled		Aluminium
Galvanic treatment		SurTec® 650
Dimensions	mm	38.5 x 38.5 x 44
Weight	g	85
Supplied incl. 4 inox screws to hold WR-42 flange	nr	M3 x 10

